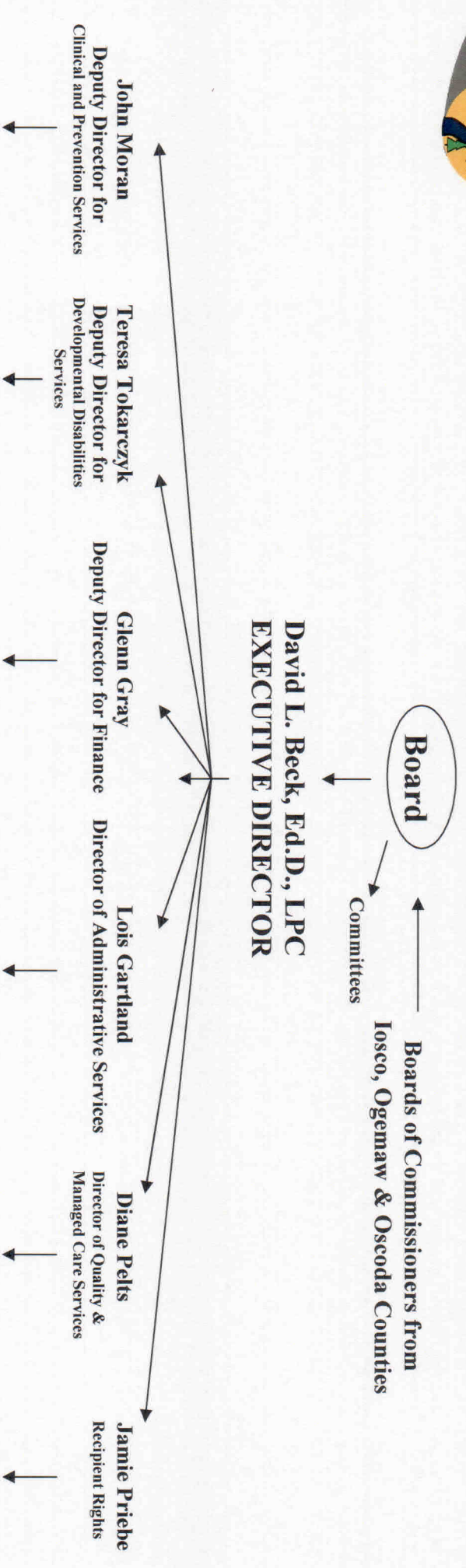




AN ISABLE VALLEY COMMUNITY MENTAL HEALTH SERVICES BOARD
Organizational Chart



See Attached	See Attached	Accounts Receivable Reimbursement Supervisor (1) Reimbursement Clerks (3)	Information Technology Information Technology Manager (1)	Utilization Management PQI COA Access Hospitals Corporate Compliance Office HIPAA Regulations	Office of Recipient Rights (.6)
		Accounts Payable Bookkeeper (1)	Clerical Services Senior Secretary (1) Tawas Secretaries (4)		
		Payroll Department Payroll Manager (1) Accounting Clerk (1)	Maintenance Maintenance Person (1)		
			Member Services		

Clinical and Prevention Services

Psychiatric Services

Dr. Haston-Fuller, Medical Director (1)
 Child Psychiatrist (2, part-time)
 Nurses (2) (.5 FTE each)

Clinical Outpatient Services

Tawas: Supervisor (1)
 Therapist (1)
 CUB (1)

West Branch: Supervisor (.6)

Therapist (1)

CUB (1)

Mio: Supervisor (.5)

CUB (.5)

Secretary (1.5)

Assertive Community Treatment

Supervisor (1)

Case Manager (4)

Nurse (1)

Para-professional Staff (3) (2 FTE)

Adult Case Management/ Residential Services

Supervisor (1)

Case Manager (3.5)

Nurse Case Manager (.5)

Residential Services

Home Manager (.5)

Full-Time Staff (5)

Substitute Staff (4)

Family Program

Supervisor (1)

WB Therapist (1)

Mio Home-Based Therapist (.5) Mio Case Manager (1)

WB Wrap Around Coord (1) Mio Wrap Around Coord (1)

WB Case Manager (3) Mio Home-Based Therapist (.75)

Tawas Team Leader/Therapist (1)

Therapist (1)

Wrap Around Coordinator (1)

Case Manager (3)

Home-Based Therapist (.5)

School Success

Supervisor (1)

School Success Staff (8)

Family Connections

Program Coordinator (1)

FC Volunteer Staff

Clerical Services

Senior Secretary (1)

WB Secretaries (2.5)

Pre-Billing

Pre-Billing Auditor (1)

Emergency Services (After Hours)

Building Maintenance (WB & Mio)

Maintenance Person (1)

Contracts

Developmental Disabilities Services

Support Services Coordination for Iosco, Ogemaw & Oscoda Counties

Supervisor (1)
 Supports Coordinator / CSM (6)
 RN (3)

Residential Services for Iosco, Ogemaw & Oscoda Counties

Residential Supervisor

and Norway Pines Home Supervisor (1)

Norway Pines (8 Staff)

Home Supervisor (1) + Cedar Lake (9 Staff)

Home Supervisor (1) + River Bend (8 Staff)

Home Supervisor (2) + Edwards (9 Staff)

Home Supervisor (1) + Beechwood (9 Staff)

Consumer Operated Homes

COH Supervisor

COH Manager (1)

Floating Team Leader (1)

Floating Team Leader (1)

Alaska Street COH (3)

Lakewood Street (3)

River Road COH (3)

Stagecoach COH (3)

Woodlea Rd. COH (3)

COH Manager (1)

Floating Team Leader (1)

Alice Street COH (3)

Meadow Road COH (3)

State Street COH (3)

Antelope Trail COH (3)

Fairview COH (3)

COH Manager

Floating Team Leader (1)

Amie St. COH (3)

Lupton COH (3)

Hayes Street COH (3)

Crestview COH (3)

Community Integration Services

Supervisor for Iosco, (1)

Community Living / Community Inclusion (3)

Supported Employment (2)

Transportation Staff (1)

Maintenance (1)

Supervisor of Ogemaw & Oscoda Counties (1)

Job Coaches (5)

Community Inclusion / Living (9)

Supported Employment (5)

Clerical Services

WB Office: 2 Secretaries

Oscoda Program Center: 2 Secretaries